

The 17 Best Shower Valves (2024 Reviews)

 linquip.com/blog/best-shower-valves

December 20, 2021

Best Shower Valves-A shower valve (also known as a manifold) is a critical component that controls the flow rate of water from your shower while maintaining the correct pressure and temperature. As a result, it appears that this fixture is critical for a safe and pleasant shower experience.

What is the function of a **Showers Valve**? These valves are shower fittings that regulate water flow and temperature. Shower valves are a crucial component of plumbing systems that use Industrial Tools. Shower Valves are available from a variety of **Suppliers And Companies**, as well as manufacturers and distributors, and there are many **Showers Valves For Sale** on Linquip.

There is a complete list of shower valve services on the Linquip website that meets all of your needs. Linquip can connect you with a number of shower valve service providers and experts who can help you. Linquip offers a team of **Showers Valves Professionals** and subject matter experts available to help you test your equipment.

Looking for Valves Device & Equipment to Buy?
Here at Linquip you have access to all of it for free

[Click HERE](#)

However, the fact that you are reading this post indicates that you are either having major shower water temperature control issues or are merely conducting research to find the best shower valve available. Whatever your motivations may be, you've arrived at the perfect place. We've all been frustrated by a sudden drop in pressure or a splash of ice-cold water in the middle of a shower.

Stay with us to learn more about the theory behind shower valves, their key parts, types, and some of the top-end goods on the market to avoid these bothersome difficulties, as well as leaks, drips, or excessive amounts of water consumption.

List of 17 Best Shower Valves in 2024

According to the factors that we will mention in this article, Here is the List of 12 Best Shower Valves in 2024:

1. **DELTA R10000-UNBXHF MultiChoice Universal Shower Valve**
2. **Moen 2570 Pressure Balancing Cycling Shower Valve**

3. **Delta Faucet R10000-UNBX**
4. **Delta R11000 Shower Diverter Valve**
5. **Moen S3102 U Digital Shower Valve**
6. **Delta Faucet R10000-UNWS MultiChoice**
7. **Moen S3600 ExactTemp Volume Control**
8. **Pfister 0X8310A OX8**
9. **Moen 3510 M PACT Moentrol**
10. **KOHLER K-304-KS-NA**
11. **Hansgrohe iBox Universal Leak Preventing Valve**
12. **GROHE Grohsafe Universal Pressure Balance Rough-In Valve**
13. **MINGOR Brass Shower Arm Diverter Valve**
14. **EZ-FLO Self-Closing Shower Valve**
15. **Kingston Brass KS266C Vintage Wall Mount Tub Faucet**
16. **Symmons S-46-1-BODY Temptrol Pressure Balancing Shower Valve**
17. **American Standard R111 Pressure Balance Rough Valve Body**

How We Selected The 15 Best Shower Valves in 2024

When it comes to choosing the right shower valve, it's not just about finding the most luxurious one. Shower valves, by nature, are an essential component in any bathroom, responsible for controlling the flow of water. This means that selecting the wrong shower valve can lead to water leaks, mold growth, and even a potential safety hazard. When picking out a shower valve, it's essential to consider factors such as durability, functionality, and compatibility with other plumbing fixtures. It's important to get it right the first time to avoid any future headaches.

At Linquip, we understand the importance of selecting the right shower valve, which is why we conducted exhaustive research to locate the top 15 shower valves in 2024. We went through more than 15 web pages and hundreds of different products and reviewers to find the best shower valve options available. Along with the research and our extensive expert knowledge, we also considered price, customer ratings, material, and other factors to narrow down the options and ultimately come up with our top picks. Whether you're installing a new shower or simply replacing an old one, our research ensures that you make the best-informed decision possible.

To further enhance our selection process, we also assessed the technological advancements in each valve. Modern shower valves come with features such as thermostatic control, which maintains a constant temperature, or digital interfaces for enhanced user control. These technological features can significantly improve the showering experience, offering both comfort and safety.

Moreover, we took into account the ease of installation and maintenance. A shower valve that's easy to install and maintain can save homeowners time and money in the long run. This aspect was particularly important as it impacts the overall cost and convenience for the user. By considering these additional factors, we aimed to provide a comprehensive guide that not only focuses on the valve's immediate performance but also on its long-term usability and practicality in a household.

Top Shower Valves Reviews

1. DELTA R10000-UNBXHF MultiChoice Universal Shower Valve



DELTA R10000-UNBXHF MultiChoice Universal Shower Valve (Reference: [amazon.com](https://www.amazon.com/dp/B000048G01))

Pros & Cons

Pros

- Prevents water temperature changes
- Universal type, supports PEX, IPS, and universal connections
- Enables easy, solid, and sturdy installation

- No rocking issues
- Comes with a square plaster guard

Cons

- The cartridge doesn't come with the package
- Not suitable for tubs

Specifications

Valve Size	4.9 x 5.1 x 4.9 inches
Valve Weight	1.57 lbs. Total weight
Valve Base Diameter	1.35 inches diameter base

General Descriptions

It's a difficult process to choose the best model because there are so many high-quality products on the market. However, based on thermostatic unit reviews, we believe this is a fantastic value for the money, given the high quality and number of advanced features it contains. Delta R10000-UNBXHF is a universal multichoice model that bears the well-known MultiChoice quality marks.

It's a valve with a high flow rate. The HF rough tub port blocking feature is included. As a result, you won't need to purchase an additional plug. This will take care of everything. Additionally, it has a back-to-back option.

So, how do you put this fixture to the test? A 200 PSI air test or a 300 PSI water test should suffice. You don't have to be concerned about the impacts of heat and pressure during the testing. This one, like Delta's Monotor line, uses a pressure balance mechanism to regulate the water temperature. The test cap can withstand both pressure and heat. Before adding the cartridge, you can test the fixture.

This device is compatible with three different types of cartridges when it comes to the cartridges themselves. The single and dual cartridges, as well as the dual thermostatic cartridge, are among them. It does not necessitate any plumbing changes. It's a universal valve that allows you to modify the style of your shower with ease.

Furthermore, the mounting bracket ensures a robust, long-lasting installation. There will be no rocking. There are three sorts of connections. The universal connection, PEX, and IPS connection types are among them. You won't need any additional tools to remove this model because it comes with a square plaster guard. It can be easily installed, even with simple 90-degree cuts.

Wait, there are more fantastic features to discuss! The manufacturer, Delta, offers a limited lifetime guarantee on this model, just like the DR10000UNBX. It's made in the United States.

Our Verdict

What we enjoyed best about this top-rated valve is Delta's unique mechanism, which allows you to change your shower function without having to mess with the plumbing. This saves you time and energy and gives convenience in terms of functionality. This is a general model that works well in high-flow situations. In terms of modern technology and convenience of use, it's the best shower valve. Grab it now before it is sold out.

2. Moen 2570 Pressure Balancing Cycling Shower Valve



Moen 2570 Pressure Balancing Cycling Shower Valve (Reference: toiletsguide.com)

Pros & Cons

Pros

- Comes with a warranty against leaks, defects, and drips
- Easy to install
- Has four ports
- Suitable both for showers and tubs

Cons

It is actually more expensive than its peers

Specifications

Valve Size	7 x 7 x 6-inch total dimensions
Valve Weight	1.5 pounds
Valve Connection	½-inch connection
Junctions	4 ports

General Descriptions

This posi-temp valve is ideal for use in both showers and bathtubs. You can also use it in conjunction with a transfer valve. You'll obtain a shower spa with body sprays this way. As a result, this product's greatest strengths are its versatility and multi-functionality. We're sure you've experienced frustrating pressure drops when showering. This is the best alternative to use if you're looking for a solution to this problem.

Furthermore, this fixture is suitable for a variety of connections, including PEX, conventional connections, copper, IPS, and CPVC. It has ornamental trim as well. Before you install the trim, you need to first establish the temperature. In general, this product's setup is quite straightforward. You can also adjust the trim without causing damage to the valve.

It has four ports and is made of sturdy brass. As previously said, it equalizes the pressure. It also includes a temperature restriction function. This improves your security. There's also a back-to-back option and incorporated stops. It's also a good option if you don't want to replace the plumbing but need to fix a fixture. Because it is developed and manufactured in compliance with ASSE specifications, you may think of this valve as a convenient replacement part as well.

How about the guarantee? It has a one-year warranty that covers leaks, finish flaws, and drips. Moen offers a limited lifetime warranty.

Our Verdict

Look no further if you are seeking a multifunctional posi temp shower and tub valve that will provide you with a solution to pressure fluctuations and are not on a budget. This Moen model will address your issues in a flash. It's simple to set up and change. The manufacturer provides a very good, limited lifetime warranty.

3. Delta Faucet R10000-UNBX (Budget Choice)



Delta Faucet R10000-UNBX (Reference: [ebay.com](https://www.ebay.com))

Pros & Cons

Pros

- Affordable
- Needs a simple and easy installation
- Changes your shower function without messing with the plumbing in the wall

- Supports three different types of connections

Cons

The cartridge doesn't come with the delivery package

Specifications

Valve Size	4.9 x 5.1 x 4.9 inches
-------------------	------------------------

Valve Weight	1.54 pounds
---------------------	-------------

Valve Type	90-degree cuts
-------------------	----------------

General Descriptions

We chose this fantastic valve from Delta Faucet Company as our best-value option. The qualities of this product, on the other hand, will appeal to you. Despite its inexpensive cost, it is a high-quality fixture. The fixture, which is made in the United States, guarantees great quality and dependable performance. It comes with a sturdy mounting bracket that keeps it from wobbling. The setup is simple, and the result is solid and dependable.

Additionally, this machine accepts three various types of water piping connections, including universal, IPS, and PEX. It can handle 90-degree cuts, and the square plaster protection that comes with it covers the remaining pieces, makes the installation harder, and allows the valve to snap into place tightly.

You will also like the fact that this item comes with a heat and pressure-resistant test cap. As a result, you can run all of the necessary tests before finishing the installation. This is quite convenient because you won't have to remove and reinstall the unit if any of the parameters, such as flow or temperature, need to be changed.

Delta considers your comfort and convenience at all times. As a result, this model is ideal for resolving shower leaks, pressure concerns, and other issues without the need for plumbing repairs.

Our Verdict

Buy this wonderful, economical Delta model if you want a rapid remedy to leaks, drips, or pressure concerns without spending a fortune or dealing with sophisticated plumbing within the wall. It's a simple, inexpensive, and convenient water pressure balancing unit that works with three distinct types of connections. If you're on a budget, grab this.

4. Delta R11000 Shower Diverter Valve



Delta R11000 Shower Diverter Valve (Reference: [indiamart.com](https://www.indiamart.com))

Pros & Cons

Pros

- It is proper for 3 or 6-option diverters
- This is a single-piece brass build
- It is a versatile type

Cons

- It doesn't comply with Proposition 65 on harmful materials
- The trim doesn't come with the package

Specifications

Valve Size	3.5 x 3.5 x 4 inches
-------------------	----------------------

Valve Weight	1-pound total weight
---------------------	----------------------

Valve Type	3 or 6 feature diverters
-------------------	--------------------------

General Descriptions

The Delta R11000 is our top recommendation for a shower diverter valve. It's made of brass and includes a clever leak-prevention solution. You'll never have to worry about valve leaks again because the body is manufactured from a single piece.

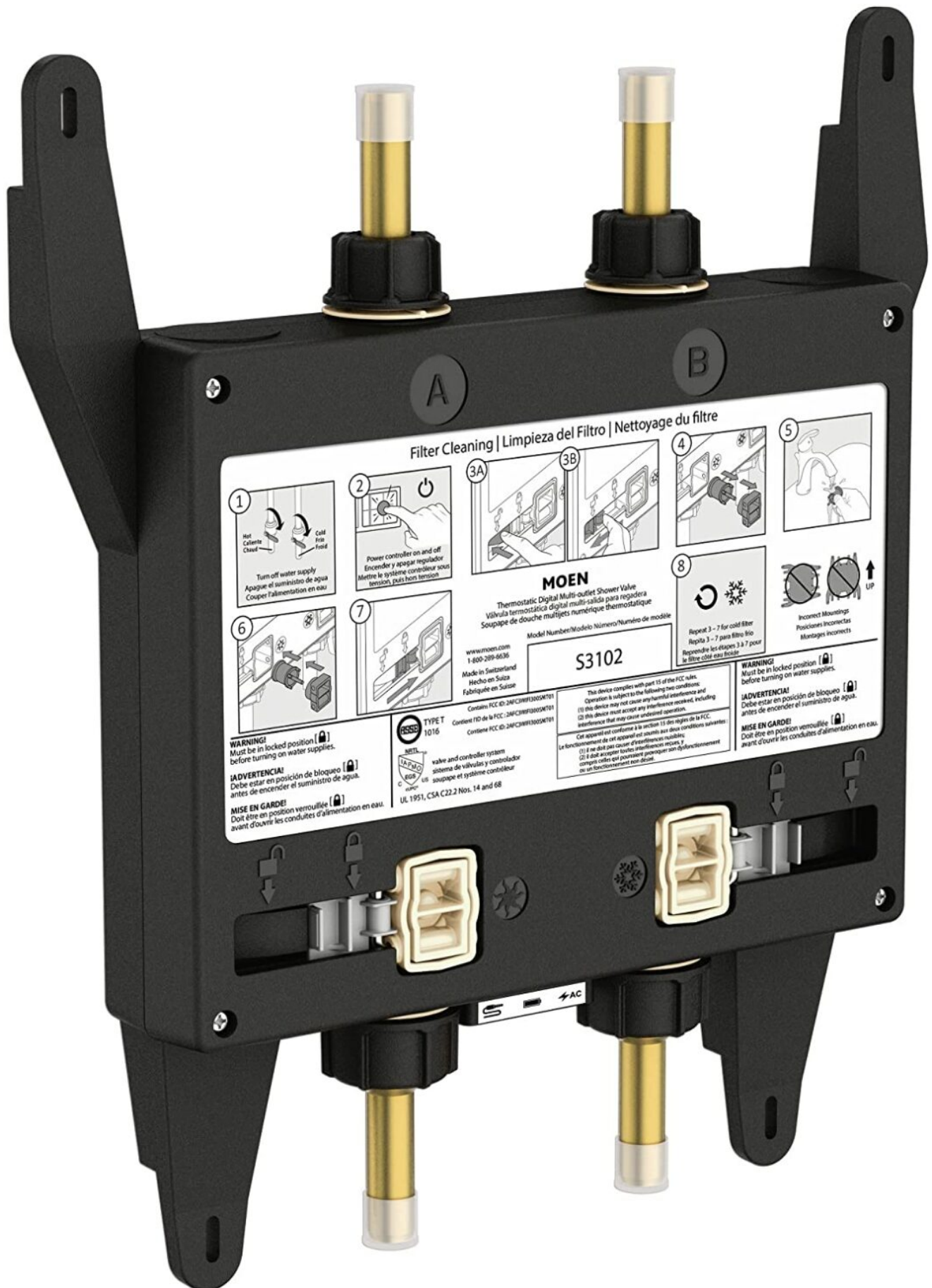
We also loved this Delta model because it is adaptable. It can be used with a triple or hexa diverter. It is ideal for both air and water tests when it comes to testing. Use 200 PSI for air tests; 300 PSI will suffice for water tests.

This rough-in model can also be used to conduct tests before the installation. A pressure test cap is included. The fact that you don't have to change the plumbing in the wall at all appealed to us. Simply set it in the appropriate location and you're ready to go. The only disadvantage is that the trim must be purchased individually.

Our Verdict

This is a superb diverter model that we definitely recommend if you're seeking one. It is simple to set up. It can be used for three or six feature diverters. It is available at a reasonable cost.

5. Moen S3102 U Digital Shower Valve



Moen S3102 U Digital Shower Valve (Reference: [lowes.com](https://www.lowes.com))

Pros & Cons

Pros

- Compact design with versatile functionality
- Precise control with digital devices
- Durable
- Lifetime support from the manufacturer

Cons

Supported only in Canada and the US

Specifications

Valve Size	1.8 x 13.8 x 15.8 inches
Valve Weight	1.5 lbs
Valve Type	Style- 2- outlet
Valve Certification	Certified frustration-free
Valve Power	AC/DC

General Descriptions

People rely on Moen's objective of providing new and diverse product lines, which has made them a household name for long-lasting bathroom fixtures. The S3102 U is a new temperature-controlling shower valve from their collection. This device has so many digitally sophisticated functions that having it in your personal area would connect you to a world of connected digital devices.

The U model has a thermostatic ExactTemp valve for precise temperature control. You may have entire control over your shower in three ways: using a remote, your phone, or your voice!

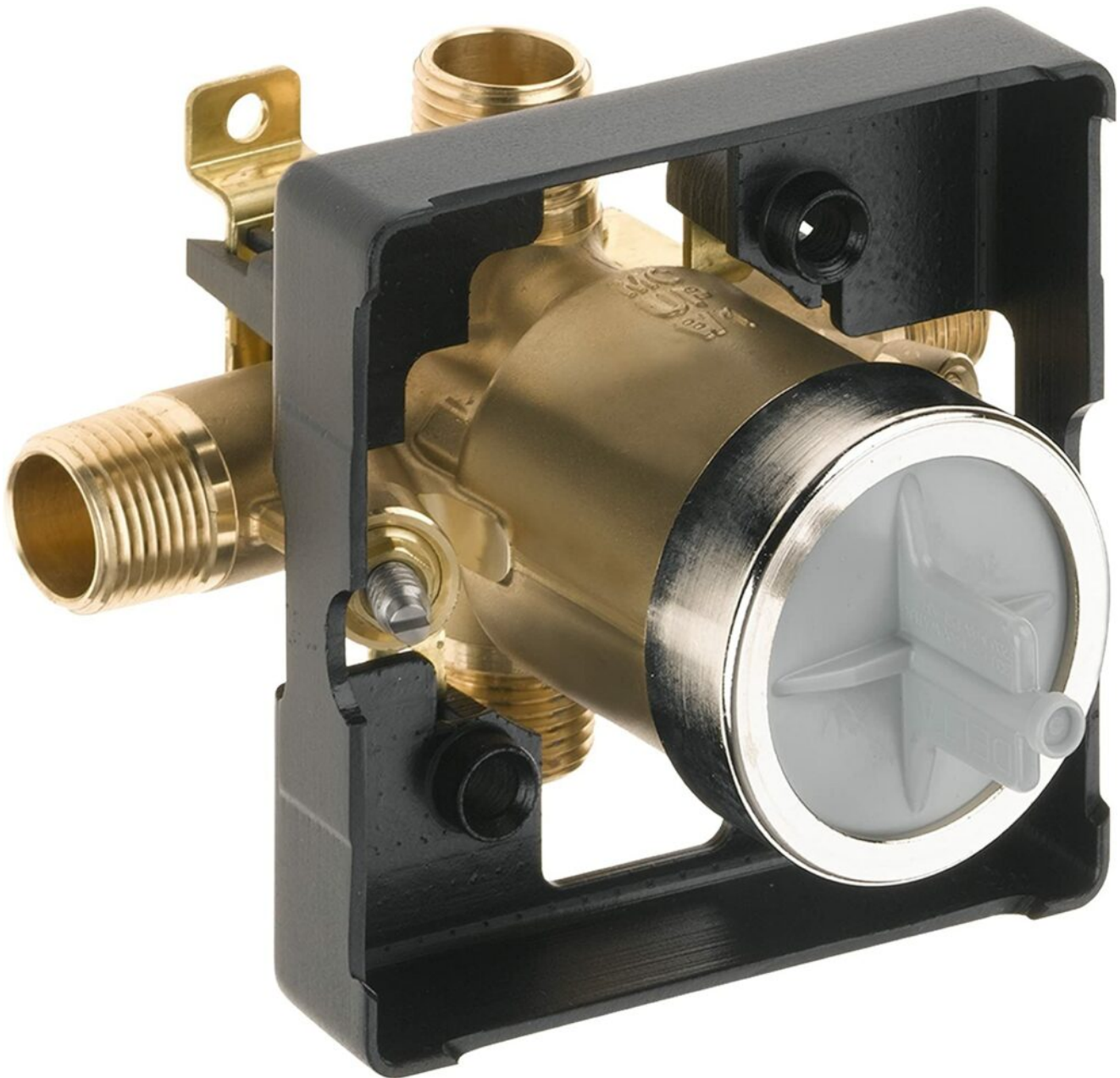
They accurately described it as a digital device when they labeled it as such. The controller may be controlled via an app, and the adequately large LCD screen makes it appear clear and simple. Because the Wi-Fi-connected device is also Alexa-compatible, you'll pick it up much faster than you think.

The built-in tactile buttons are used to control everything. Moen, on the other hand, made it even better with their Lifetime limited warranty coverage.

Our Verdict

Look no further if you are a control freak (in a good way) who is fascinated by digital technology. This one from the brand's digital product line comes highly recommended. Although it is not easy to install, once it is in place, it should last for a long time. The manufacturer will also provide you with a lifetime warranty.

6. Delta Faucet R10000-UNWS MultiChoice



Delta Faucet R10000-UNWS MultiChoice (Reference: homenish.com)

Pros & Cons

Pros

- Super flexible for installing with different plumbing styles
- Trim kits are of dual functions
- Options for universal connections
- Lifetime warranty support
- Good customer service
- Robustly built

Cons

The water flow rate is actually low

Specifications

Valve Model	R10000-UNWS
Valve Size	4.9 x 5.1 x 4.9 inches
Valve Weight	1 lb
Material	30kw
Style	Tub Valve containing stops
Warranty	Lifetime limited

General Descriptions

The main selling point of this long-lasting Delta Faucet type is that it allows you to easily upgrade your shower trim. It is extremely adaptable in the sense that it may be used with any type of plumbing method. Screwdriver stops will also be available for this purpose.

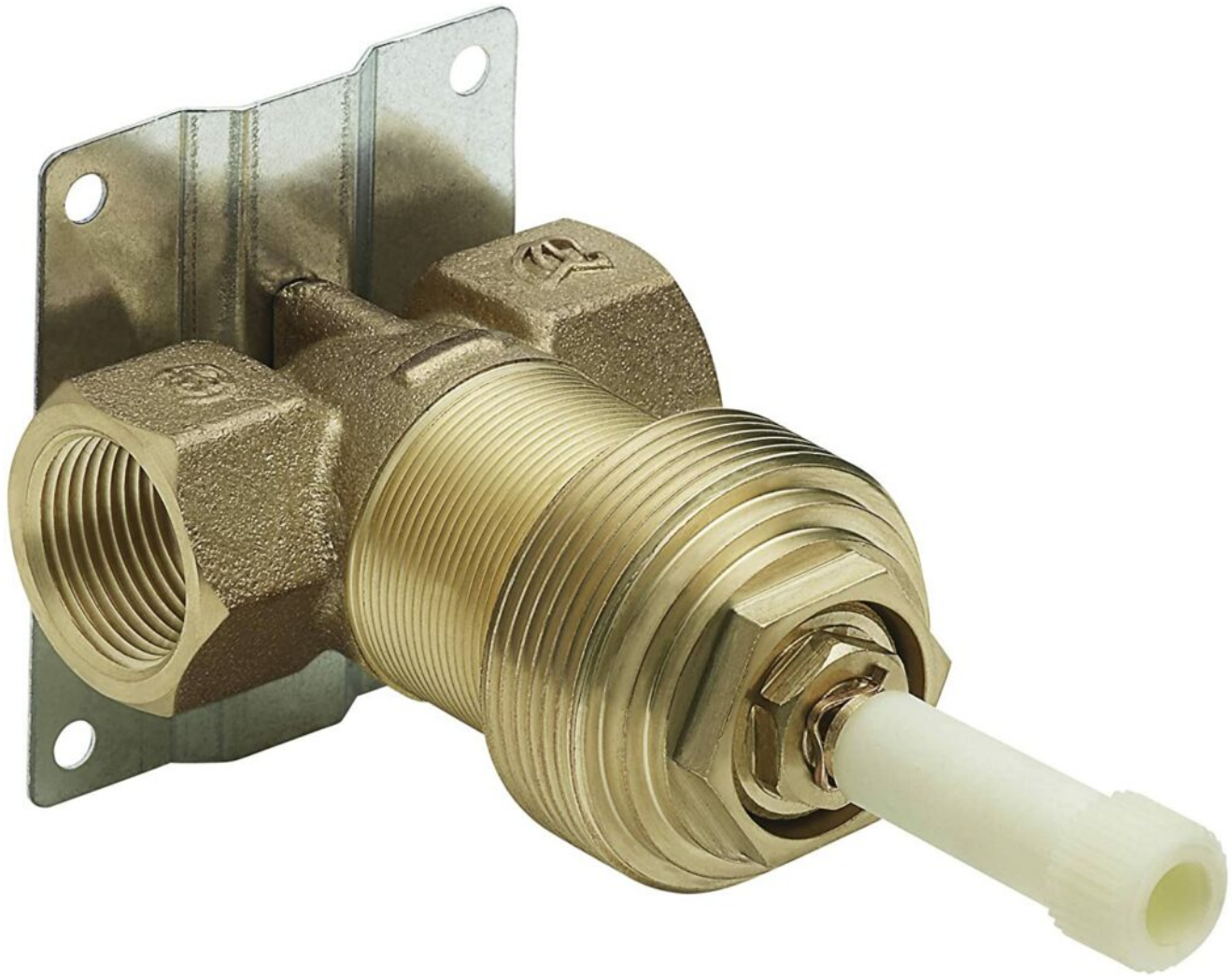
It has universal 0.5-inch apertures that accommodate iron and copper pipes of equivalent sizes. For convenience, use CPVC or PEX adapters.

The product's overall build quality is satisfactory. Unlike single liver variants, this one does not require professional installation; if you have the confidence, you may do it yourself. This MultiChoice Universal model comes with a lifetime (limited) guarantee from Delta.

Our Verdict

We were cautious when evaluating this product because it has received some negative feedback. The installation was simple, and it functioned correctly right away. Poor delivery services or missing items from third-party suppliers could result in negative feedback. In most circumstances, though, it shouldn't be an issue.

7. Moen S3600 ExactTemp Volume Control



Moen S3600 ExactTemp Volume Control (Reference: [homedepot.com](https://www.homedepot.com))

Pros & Cons

Pros

- The exact Temp feature allows you to pick the desired temperature
- Made from durable, double-brass construction
- The limited lifetime warranty covers leaks, drips, as well as defects
- Ceramic disks make it leakproof

Cons

Shipping is available only in the USA and other selected countries

Specifications

Flow rate	13 GPM flow rate at 60 PSI
------------------	----------------------------

Valve Size	7.2 x 3.8 x 3.6 inches
Valve Weight	1.6 pounds of the total weight
Connection	¾ and ¼-inch connection

General Descriptions

Another fantastic Moen valve, the S3600, is ideal for volume control. It's designed for 3/4-inch standard plumbing installations and connections. This means you can effortlessly replace or upgrade the look of the entire faucet.

It is recommended that this transfer valve be used in conjunction with a thermostatic valve from the same manufacturer for the best performance. This will allow for precise temperature control.

This product has a lot of flexibility and is simple to upgrade. You may turn it into a combination by adding a body spray, hand shower, or head shower. It has a large flow capacity and each device can be controlled separately. Furthermore, it is not only compatible with its original, main intake, but also with 1/2-inch connectors.

Its double-brass construction was also appealing to us. It is strong and long-lasting. It's also resistant to heat. This product comes with a limited lifetime warranty from Moen. It also contains ceramic disks to keep leaks at bay. Finish flaws are covered by the warranty. It also addresses all types of leaks and drips.

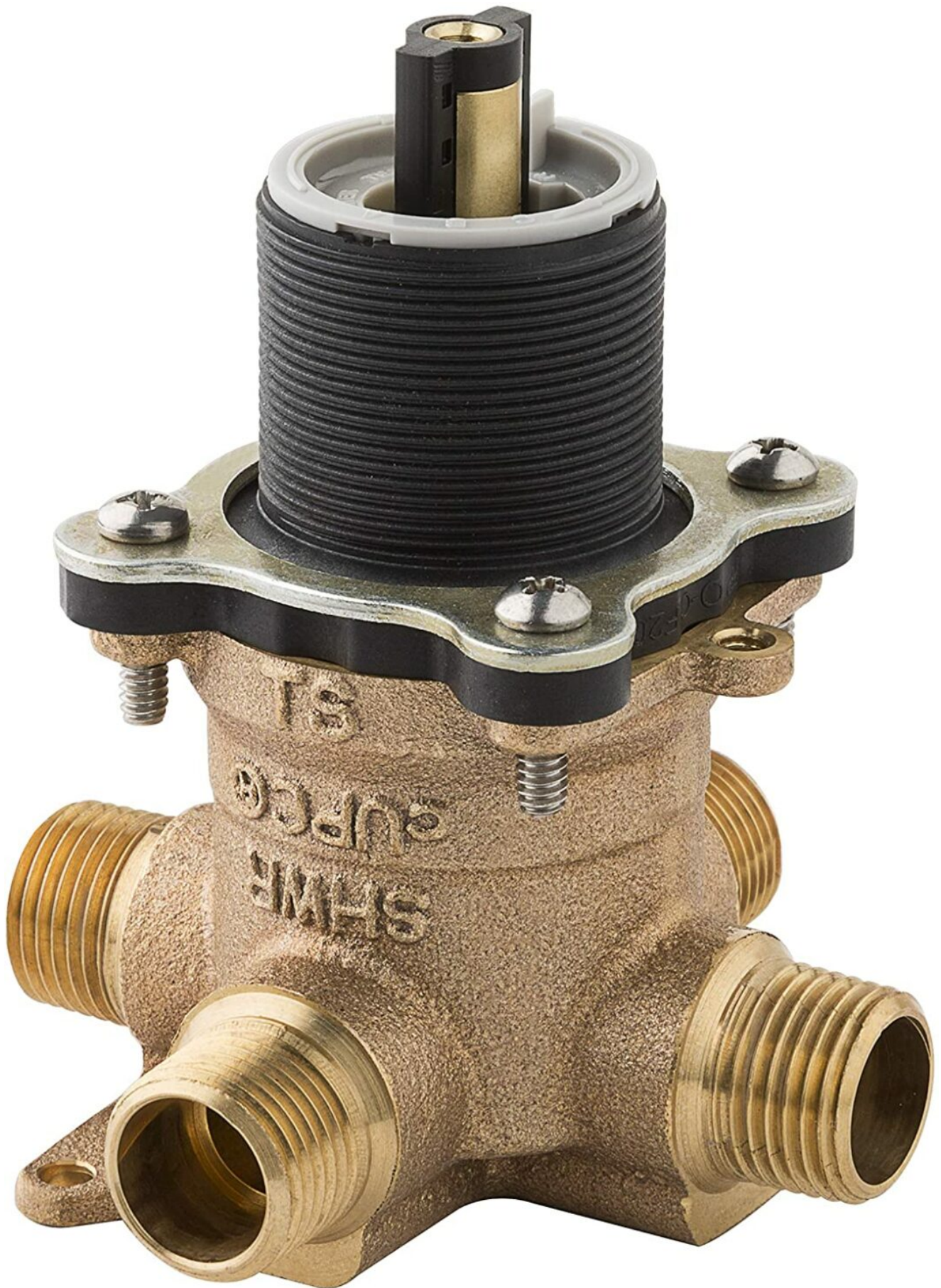
The built-in Exact Temp function is also included. What is the purpose of this feature? You may easily select the desired temperature, and the valve will ensure that the water does not fall below or rise over that level.

This product can be used with IPS connections. When it comes to flow rate, it's 13 gallons per minute. At a pressure of 60 PSI, this is the rate.

Our Verdict

The MoenS3600 shower valve is a good choice if you want a long-lasting, adaptable, and dependable shower valve. It features double brass construction, leak-proof ceramic disks, and the ExactTemp feature, which allows you to select the desired temperature. Furthermore, Moen offers a limited lifetime guarantee on this product. Finish flaws, as well as spills and leaks, are all covered.

8. Pfister 0X8310A OX8



Pfister 0X8310A OX8 (Reference: [amazon.com](https://www.amazon.com))

Pros & Cons

Pros

- Holds multiple certificates
- Compliant with international shower valve regulations
- Comes with a lifetime warranty

Cons

- Trim is not included in the package
- Proposition 65

Specifications

Flow rate	5.5 GPM at 60 PSI pressure
Valve Size	0.1 x 7.6 x 7.8 inches
Valve Weight	0.16-ounce total weight
Connection	½-inch inlet

General Descriptions

Solid brass is used to construct this shower valve. It has a long-lasting and sturdy build. The setup is also pretty straightforward. It's a system-based installation with back-to-back connections. It's a single-hole installation, a do-it-yourself project that requires only a few basic equipment and abilities.

Furthermore, not all models on the market come with everything you'll need for them to work properly. With this product, however, this is not the case. The rough-in valve and cartridge are included in the kit. It's a top-of-the-line pressure-control cartridge.

Let's have a look at its technical specifications. This is a female IP-type 12-inch inlet. It can also be used with CPV and PEX fittings. It comes with a lovely protective cover.

When it comes to warranties, you'll love the manufacturer's lifetime finish, function, and leakage warranties. It also works for both shallow and deep installations, as we discovered. An accurate spool-balanced unit is available.

Dripping and leakage are prevented by the ceramic disc. This product, however, is not suitable for tubs. It should only be purchased if you require a shower valve. At 60 PSI pressure, the water flow rate is 5.5 GPM.

It has numerous certifications and compliances, including IAPMO and CSA B125 certifications, to name a few. It also complies with the ASME A112.18.1 and ASSE 1016 standards.

Our Verdict

This is an excellent choice if you want a machine that has multiple safety and quality certifications. This product maintains a constant 5.5 GPM water flow rate by regulating pressure. It's simple to set up and fits 12-inch inlets.

9. Moen 3510 M PACT Moentrol



Moen 3510 M PACT Moentrol (Reference: [ubuy.com](https://www.ubuy.com))

Pros & Cons

Pros

- Features the temperature memory option
- Easy DIY installation does not require much time
- A Pressure-balancing system provides comfort and safety

Cons

- Heavier than other similar models
- The price is on the higher side

Specifications

Type	1225 cartridge system
Valve Size	7 x 7 x 6 inches
Valve Weight	3 pounds of the total weight
Connection	1/2" connection

General Descriptions

This shower valve can be used in both showers and bathtubs. It can also be used in conjunction with transfer valves, making it exceedingly versatile. You will get a shower spa if you chose to utilize it this way. Two body sprays, an auxiliary showerhead, and a hand shower are available. This multipurpose model allows you to get the most out of your shower or tub.

Furthermore, it is a versatile valve that may be used for CC, IPS, or normal 12-inch connections.

The installation procedure is simple. Consider it a do-it-yourself project. It takes no time at all, and you only need the most basic tools. The only thing you need to be concerned about is checking the pressure and temperature before installing the decorative trim.

We noted that this device has excellent volume control while testing it. In terms of volume management, it actually outperforms its competitors. From a very low stream to a full capacity flow, you may easily and accurately adjust the volume.

One clever feature is that you may close the handle to a precise position, allowing for temperature memory. You won't have to seek it the next time you want to utilize the same temperature! There are also incorporated stop options.

You won't have any issues if you wish to upgrade, modify, remove, or replace the valve in the future. The trim mechanism makes it simple to make changes in the future. You will not be responsible for the plumbing or the fittings.

This brass product comes with a limited lifetime warranty that covers faults, cracks, and leaks.

Our Verdict

Choose the Moen 3510 M-Pact model if you want a shower valve with a lot of bells and whistles. It enables you to activate the temperature memory feature by closing the handle on the appropriate temperature setting. It also comes with built-in stops. It's also long-lasting, and simple to set up and upgrade.

10. KOHLER K-304-KS-NA



KOHLER K-304-KS-NA (Reference: [flipkart.com](https://www.flipkart.com))

Pros & Cons

Pros

- Perfectly controls water temperature and pressure
- Allows adjusting the flow rate according to your needs
- Comes with an integrated screwdriver
- Suitable for high-volume installations

Cons

- Comes without the trim and some users said it was hard to find the appropriate trim
- Made in China, many users are considered that a disadvantage

Specifications

Flow Rate	5 GPM flow rate
------------------	-----------------

Valve Size	7 x 7 x 6.5 inches
-------------------	--------------------

Valve Weight	3.1 pounds of the total weight
---------------------	--------------------------------

General Descriptions

This is an excellent choice if you need a valve that can handle high-volume installations. The temperature management and water flow consistency are great with this back-to-back installation model.

Furthermore, if you're seeking professionally manufactured anti-scald valves, this is the model to go for. It also includes a built-in screwdriver, which is uncommon on the market. It is incredibly convenient for any future repairs or replacements. This is also a great rough-in model. The mounting tabs are on the rough-in, allowing for a secure installation.

One of the unique features of this model is the Rite-Temp technology, which controls both pressure and temperature to maintain them within 3 degrees of your selected values. You won't need to buy any additional installation parts, such as adjustment fittings, because their connections are constructed according to universal laws.

One of the disadvantages is that the valve trim is not included in the package, which is essential for the unit's proper installation. Let's have a look at the product's entire specifications, advantages, and disadvantages.

Our Verdict

The Rite-Temp technology, which is rarely found on the market, is the major benefit of this excellent shower valve. It regulates both the temperature and the pressure. It also protects against scorching. You'll get a relaxing and safe showering experience with no unexpected pressure decreases or temperature fluctuations.

11. Hansgrohe iBox Universal Leak Preventing Valve



Hansgrohe iBox Universal Leak Preventing Valve (Reference: assets.hansgrohe.com)

Pros & Cons

Pros

- The collar can be adjusted to fit a variety of applications.
- This universal design is compatible with both pressure-balancing valves and thermostatic valves.
- The seal around the wall prevents leaks.

Cons

Trim kit is not included.

Specifications

Item Weight	2.64 pounds
Product Dimensions	6 x 5.88 x 5.5 inches
Size	0.75 Inch
Material	Brass
Number of Handles	1
Handle Material	Pvc, Rubber
Mounting Type	Wall Mount

General Description

Flexible design and easy installation characterize the Hansgrohe iBox Universal Leak Preventing Valve. With its compatibility with all Hansgrohe and Axor shower trims, such as pressure balance and thermostatic models, it allows users to update and maintain their showers whenever they wish. Water hammer and multiple showers a day are no problem with this collar, which is mounted directly to the wall studs. The collar can be adjusted to fit most wall thicknesses.

It is possible to provide multiple outlets for showering with this Hansgrohe, such as a handheld shower wand, shower head, and tub spout. Its PVC housing also helps dampen in-wall vibrations and noise, making it a relaxing and quiet shower experience. There is, however, a trim kit required.

Our Verdict

The quality of the product is excellent. Designed for 3/4-inch plumbing, this universal box is made from sturdy and durable materials. Installation by a certified plumber is recommended, but there is a video on the website showing how to install it. This brand would be a good choice.

12. GROHE Grohsafe Universal Pressure Balance Rough-In Valve



GROHE 35015001 Grohsafe Universal Pressure Balance Rough-In Valve (Reference: [grohe.us](https://www.grohe.us))

Pros & Cons

Pros

- A wide range of temperature adjustments is available.
- A built-in check valve prevents backflow.
- The extra outlet can be shut off with the plug included.

Cons

A trim kit is required.

Specifications

Item Weight	3 pounds
Product Dimensions	7.2 x 2.95 x 17.09 inches
Size	1
Material	Brass
Number of Ports	3
Exterior Finish	Copper, Metal
Inlet Connection Type	Sweat
Outlet Connection Type	Sweat

General Description

Anyone looking for an affordable and quality shower valve should consider the Grohe Pressure Balance Rough-In Valve. Any Grohe trim kit can be used with this pressure-balance valve. There are two inlets for hot and cold water as well as two outlets to connect a shower head and a tub. There is a plug to block off the other outlet if you prefer to just use the tub spout or shower head.

Shower valves like this one have a wide range of temperature adjustments, allowing users to adjust by turning 265 degrees between handle stops. Moreover, a check valve prevents water from back feeding into the other line. There are two built-in shutoffs on the Grohe for leak-free operation within the wall when it comes to maintenance. You will need a trim kit for this product.

Our Verdict

Keeping your family safe from scalding and cold shocks is as easy as installing Grohsafe Pressure Balance Valves. By allowing a wide comfort zone, Grohsafe allows you to regulate water temperature gradually and precisely. Your bathing space will be enhanced by GROHE's superior technology and stunning designs.

13. MINGOR Brass Shower Arm Diverter Valve



MINGOR Brass Shower Arm Diverter Valve (Reference: [amazon.com](https://www.amazon.com))

Pros & Cons

Pros

- There are three finishes to choose from.
- With three positions, you can use it as a shower, a faucet, or a combination of both.
- The construction is robust and made of a single piece of brass.

Cons

It is only a diverter valve; it does not balance pressure or mix temperatures.

Specifications

Item Weight	7.8 ounces
Product Dimensions	2.64 x 1.77 x 2.64 inches
Material	Brass

Number of Handles	1
Exterior Finish	Chrome, Metal, Polished
Inlet Connection Type	Female Iron Pipe
Outlet Connection Type	G Connector

General Description

The showerhead valves in a home with hard water can be finicky. Mingor's Brass Shower Arm Diverter Valve may be the right solution if a diverter valve is not working correctly.

Those who don't already own a separate shower wand can install this diverter valve easily since it attaches to the pipe behind the shower head. During 180 degrees of backward rotation, all of the water flows to the wand. A 180-degree forward turn will result in all the water leaving the shower head. At a 90-degree angle, both outlets are equally mixed.

The one-piece brass construction of this model makes it sturdy and resistant to hard water conditions. Installation is easy with the included O-rings. The unit is available with chrome, brushed nickel, and oil-rubbed bronze trim finishes. A basic shower kit is still required because this valve does not mix cold and hot water.

Our verdict

It works great and is very easy to install. This diverter would make a great addition to your home. Everything that you need to install this product is included in the package.

14. EZ-FLO Self-Closing Shower Valve



EZ-FLO Self-Closing Shower Valve (Reference: ez-flo.net)

Pros & Cons

Pros

- It shuts down automatically.
- There is a universal thread of 0.5 inches.
- Drought-prone areas are protected.

Cons

To prevent freezing, the chain needs to be caught by a hook.

Specifications

Item Weight	1 Pound
Product Dimensions	2.5 x 1 x 3.5 inches
Material	Stainless Steel, Brass
Exterior Finish	Chrome
Inlet Connection Size	8.75 x 2.5 x 2.5 Inches
Inlet Connection Type	Female Iron Pipe
Outlet Connection Type	Flange

General Description

When kids forget to turn off outdoor showers, it can be a big problem for the wallet, especially if they live on well water or in a drought-stricken area. The EZ-Flo self-closing shower valve mounts directly to an existing shower head and works as long as the pull chain is tight. It shuts off when the chain is released, saving water, which makes it ideal for homes located in drought-prone areas or with older wells.

With a chrome finish and brass construction, it is a durable outdoor option. Inlet and outlet connections are 0.5 inches, making it a direct fit on the majority of water supply pipe fittings.

Before winter sets in, make sure that the outdoor shower's pipes have been drained. In order to prevent a pipe from bursting, you can also install a catch on the pull chain.

Our Verdict

The EZ-FLO Self-Closing Shower Valve is designed with a mechanism for allowing water to flow once the chain is pulled, and stopping it once the chain is released. With its durable brass construction and chrome finish, this shower valve resists corrosion, rust, and daily wear and tear. Public showers and locker rooms are the main applications for this product.

15. Kingston Brass KS266C Vintage Wall Mount Tub Faucet



Kingston Brass KS266C Vintage Wall Mount Tub Faucet (Reference: kingstonbrass.com)

Pros & Cons

Pros

- It has an attractive appearance.
- The finish is all brass to ensure durability.
- A showerhead is included.
- It can be mounted on the wall or in the tub.

Cons

There is no temperature control or balancing.

Specifications

Item Weight	7.13 pounds
Product Dimensions	7.2 x 9.1 x 6 inches
Size	6-Inch Adjustable Center
Material	Chrome
Number of Handles	2
Finish	Polished Chrome

General Description

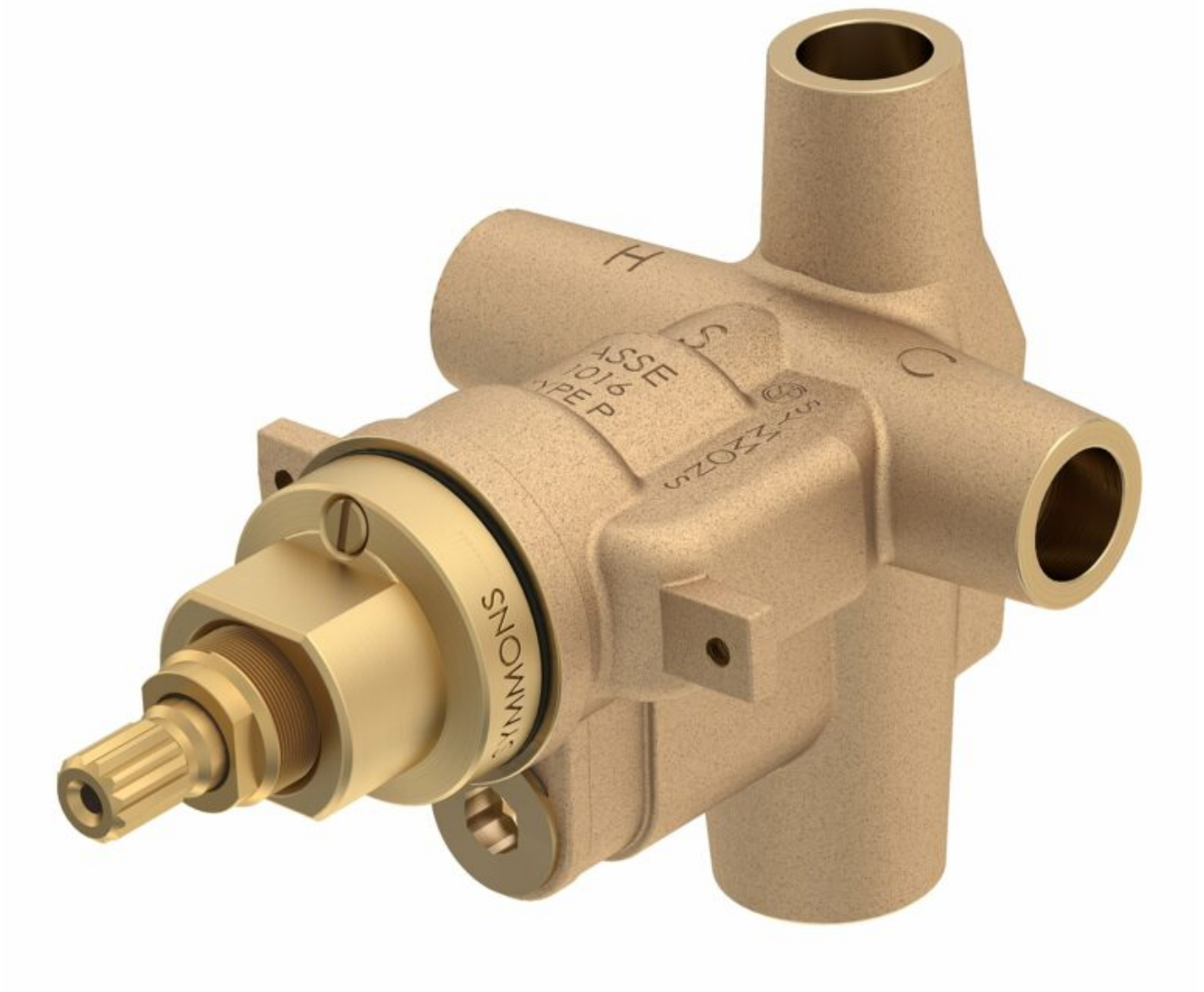
Check out the Kingston Brass KSC266C Wall Mount Tub Faucet if you want to upgrade your clawfoot tub or luxury shower. Designed with a two-hole installation pattern, this kit can be mounted to the wall for shower setups or connected to a clawfoot tub's plumbing. There are two separate valves to adjust the temperature, and the tub spout features a 59-inch shower wand that sits on the spout. A variety of finishes are available: chrome, matte black, brushed nickel, and antique brass.

In spite of its lack of high-tech features, this shower valve has a sturdy all-brass body (whatever the finish) along with drip-free quarter-turn cartridges, preventing minor leaks common to older tubs.

Our Verdict

This high-quality bathtub faucet features a beautiful finish and functions properly, plus you can use the hand-held tool if you would like to wash your hair or even flush out the tub. An excellent choice!

16. Symmons S-46-1-BODY Temptrol Pressure Balancing Shower Valve



Symmons S-46-1-BODY Temptrol Pressure Balancing Shower Valve (Reference: [amazon.in](https://www.amazon.in))

Pros & Cons

Pros

- **Pressure Balancing:** Offers consistent water temperature even with fluctuations in water pressure, enhancing safety.
- **Durability:** Built with high-quality materials, ensuring longevity and reliable performance.
- **Safety Features:** Includes an adjustable stop screw to prevent scalding.
- **Ease of Installation:** Generally straightforward to install, compatible with standard plumbing connections.

- **Brand Reliability:** Symmons is known for their reliable and long-lasting plumbing products.

Cons

- **Aesthetics:** The design is more functional than stylish, which might not appeal to those seeking a modern look.
- **Weight:** Slightly heavier than some other models, which could require additional support during installation.
- **Limited Customization:** The focus is on reliability and safety rather than customizable features.
- **Cost:** May be more expensive than some basic models, though the investment reflects its quality.
- **Compatibility:** While it fits most systems, in some unique plumbing setups, additional adjustments or parts might be necessary.

Specifications

Valve Size	Typically around 5-6 inches in length
Valve Weight	Approximately 3-4 pounds (1.36-1.81 kg)
Connection	Universal connections, typically 1/2 inch NPT

General Description

The Symmons S-46-1-BODY Temptrol Pressure Balancing Shower Valve is a well-regarded component in the plumbing industry, known for its reliability and consistent performance. This valve is specifically designed to provide a balanced pressure of hot and cold water, ensuring a comfortable and safe shower experience. The pressure-balancing feature is particularly crucial in preventing scalding or sudden cold spurts, which can occur when other water sources in the house are used. This makes the Symmons Temptrol valve an ideal choice for households with varying water usage patterns.

Symmons has built a reputation for producing high-quality plumbing fixtures, and the S-46-1-BODY is no exception. It is constructed with durable materials that are designed to withstand the rigors of daily use. The valve’s robust build quality ensures longevity and reduces the need for frequent replacements or repairs. It also features an adjustable stop screw to limit handle turn, providing additional safety against scalding, making it a reliable option for families with children or elderly members.

Our Verdict

The Symmons S-46-1-BODY Temptrol Pressure Balancing Shower Valve is a solid choice for anyone looking to upgrade their shower system. Its reliable pressure balancing, durable construction, and safety features make it a top contender for both residential and commercial applications, offering peace of mind and a comfortable showering experience.

17. American Standard R111 Pressure Balance Rough Valve Body



American Standard R111 Pressure Balance Rough Valve Body(Reference: [amazon.in](https://www.amazon.in/dp/B000048888))

Pros & Cons

Pros

- **Consistent Water Temperature:** Maintains stable temperature, preventing scalding and cold shocks.
- **Durability:** Made with high-quality materials, ensuring long-term reliability.
- **Compatibility:** Works with a range of American Standard shower trims, offering design flexibility.
- **Safety Features:** Pressure balance mechanism enhances user safety.
- **Reputable Brand:** American Standard is known for quality plumbing products.

Cons

- **Design Limitation:** Primarily functional in design and may not suit those looking for more modern or unique aesthetics.
- **Installation Requirements:** Professional installation recommended for optimal performance.
- **Limited Customization:** Focuses on basic functionality rather than advanced features.
- **Weight:** Slightly heavier than some compact models, which could be a consideration during installation.
- **Cost:** May be more expensive compared to basic models, but offers value in quality and durability.

Specifications

Valve Size	Approximately 4-5 inches in length
Valve Weight	Around 2 pounds (0.91 kg)
Connection	Universal 1/2 inch NPT connections

General Description

The American Standard R111 Pressure Balance Rough Valve Body is a key component in maintaining an optimal shower experience. Designed for durability and efficiency, this valve body is part of American Standard's renowned lineup of plumbing fixtures, known for their quality and reliability. The R111 model features a pressure-balancing mechanism that

ensures a consistent water temperature in the shower, preventing sudden changes that can occur when other water fixtures in the home are used. This functionality is crucial for avoiding uncomfortable temperature fluctuations and enhancing safety against scalding.

Constructed with robust materials, the American Standard R111 is built to last, offering longevity and consistent performance. It is compatible with various American Standard shower trim kits, allowing for flexibility in design and style choices. The valve's focus on safety and reliability, coupled with its compatibility with a range of stylistic preferences, makes it a versatile choice for both new installations and bathroom renovations.

Our Verdict

The American Standard R111 Pressure Balance Rough Valve Body stands out for its solid construction and reliable performance. It is an excellent choice for those seeking a dependable valve body that provides consistent water temperature control. Its compatibility with various trim styles also makes it a versatile option for different bathroom designs.

FAQs about the Best Shower Valves of 2021

What Are Shower Valves Used for?

Shower valves are necessary for controlling the flow of water from the showerhead. In other terms, it controls the rate of water flow. Furthermore, they maintain the pressure's constancy.

Are Three-Handle Shower Valves Illegal?

In accordance with ASSE 1016, the Uniform Plumbing Code and the International Building Code now require all tub/shower faucets to be of the pressure balance or thermostatic mixing valve type. The handles for valves two and three are not. The goal is to prevent major injury from scalding hot water.

What Are the Shower Valve Fixing & Replacement Tips?

Here are some pointers and suggestions for quickly repairing and replacing them:

- **If there is a lime buildup on the valve, clean it since it could create hot/cold water troubles.**
- **Before you fix the valve, turn off the water supply.**
- **Remove the trim and deal with it.**

- **Disconnect the fittings in the plumbing system.**
- **After removing the old valve, clean and sand all parts.**
- **Take apart all of the plastic components.**
- **After soldering, reassemble the plastic parts.**
- **Install the new valve and/or parts.**
- **Before completing the installation, run water and pressure tests.**
- **If there are any leaks, make sure they're fixed.**
- **Set up the trim and finish elements to complete the installation.**

What Is the Most Common Shower Valve?

The most frequent types of shower valves are pressure balancing valves, often known as mechanical or anti-scald valves. A pressure balancing valve is used to regulate the water pressure in the shower so that it does not get too hot.

Are Shower Valve Cartridges Universal?

Because cartridges aren't interchangeable between faucets, you'll need to know the part number to obtain a replacement from a local plumbing provider or online. This number is normally found on the manufacturer's website in the online edition of your faucet's owner's handbook.

Conclusion

Finally, we wanted to go over all of the necessary aspects of the finest shower valve models in detail. We hope that we have accomplished our goal and that you have learned a lot about selecting, installing, maintaining, repairing, and replacing these fixtures. Our review's purpose was to demonstrate some of the most innovative, high-quality shower controls available in various categories. We chose the best budget option, the best pressure regulator option, the best diverter option, and so on.

Download The 17 Best Shower Valves in 2024 PDF

You can download this article as a PDF so that you can access it whenever you like.

[Download PDF](#)

Buy Equipment or Ask for a Service

By using Linqip RFQ Service, you can expect to receive quotations from various suppliers across multiple industries and regions.

[Click Here to Request a Quotation From Suppliers and Service Providers](#)

Read More on Linqip

- **[Control Valve Manufacturers](#)**
- **[Angle Valve Manufacturers](#)**
- **[Check Valve Manufacturers](#)**
- **[Needle Valve Manufacturers](#)**
- **[Valve Manufacturers](#)**
- **[The 10 Best Toilet Fill Valves of 2021](#)**
- **[The 6 Best Tubeless Valve Stems in 2021](#)**
- **[The 10 Best Sprinkler Valves in 2021](#)**
- **[Parts of Shower Valve](#)**
- **[The Best Blow off Valves](#)**
- **[Best Pressure Reducing Valves](#)**
- **[6 Different Shower Valve Types + Pictures: Your 101 Guide!](#)**
- **[The 10 Best Water Shut off Valves](#)**
- **[The 9 Best Ball Valves: Top Rated Models](#)**
- **[Best Check Valve for Sump Pump: 9 of the Best Models](#)**